



Easy Chess Puzzle # 0056

By

G Bud Games
<https://gbud.in>

October 28, 2021

Contents

Easy Chess puzzle # 0056 - Gain queen through a fork	3
Easy chess puzzle 0056	3
Solution to easy chess puzzle 0056	4
Solution 1	4
Right moves for the solution to the easy chess puzzle 0056	6
Explanation for the moves	6
Categories of easy chess puzzle 0056	7
How to view the solution to easy chess puzzle 0056	7
How to get help for moves in the easy chess puzzle 0056	8
Play chess for free	9

List of Figures

1	Solve this easy chess puzzle 0056. Gain queen through a fork @ https://gbud.in/g4x7pg1	3
2	Solve this chess puzzle online with solution @ https://gbud.in/g4x7pg1	3
3	Initial board position of easy chess puzzle 0056	4
4	Bc4+ - This is a bishop fork since the bishop attacks the queen and king at the same time. Queen is forced to respond since it will be captured any way	5
5	Qxc4 - Opponent understands that they will anyhow lose their queen. They may want to have a maximum damage to you before their queen is captured. Hence they capture your bishop which is a desperado move.	5
6	dxc4 - The pawn captures the opponent's hanging queen. This is how you capture queen through a fork	6
7	Click the solution button to view solutions @ https://gbud.in/g4x7pg1	7
8	Click the help button to get help on next move @ https://gbud.in/g4x7pg1	8
9	Solve more easy puzzles @ https://gbud.in/chsezpz	8
10	Solve other puzzles @ https://gbud.in/chsgppz	8
11	Play chess online for free. Solve puzzles and play with friends	9
12	Solve this puzzle online by scanning this QR code or go to the link below	10

Easy Chess puzzle # 0056 - Gain queen through a fork

Solve this easy chess puzzle and improve your chess games through improvement of your chess strategies and chess tactics.

Puzzle No : 0056

Difficulty level : Easy

Description : Gain queen through a fork

Next Move : White

Player level : Beginner

Short URL for puzzle : <https://gbud.in/g4x7pg1>

Easy chess puzzle 0056

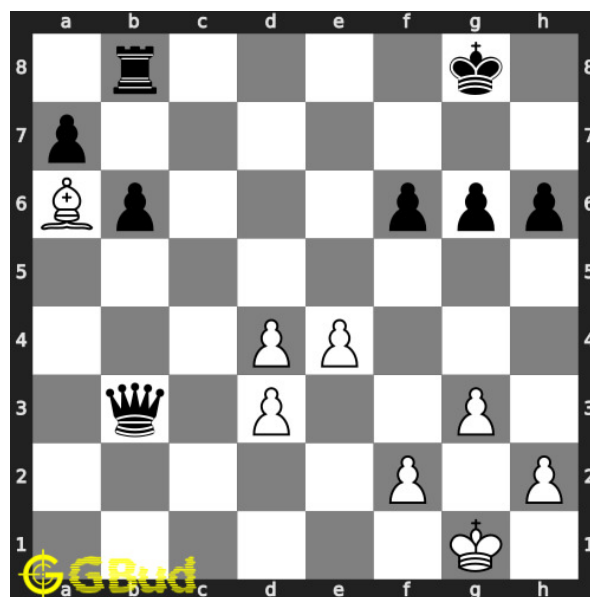


Figure 1: Solve this easy chess puzzle 0056. Gain queen through a fork @ <https://gbud.in/g4x7pg1>



Figure 2: Solve this chess puzzle online with solution @ <https://gbud.in/g4x7pg1>

Solution to easy chess puzzle 0056

At this puzzle, next **move** is by **White**. The objective of the puzzle is to gain queen through a fork.

See the interactive solution at the [puzzle page](#)

Solution 1

Initial board position This is the initial board position of easy chess puzzle 0056.

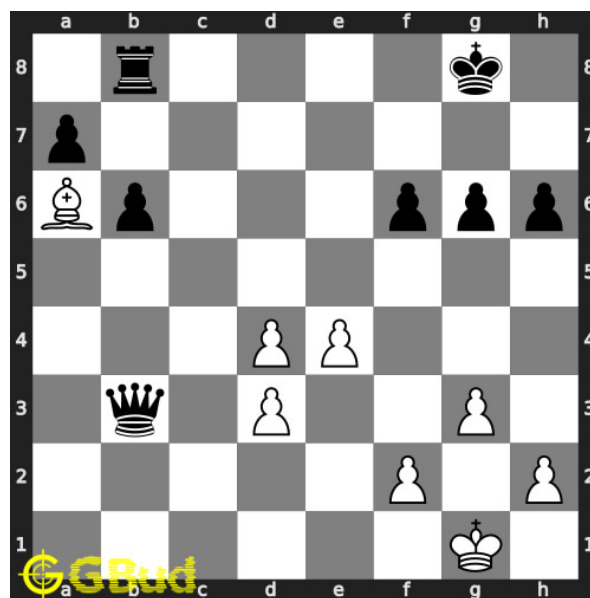


Figure 3: Initial board position of easy chess puzzle 0056

Move 1 Move by white

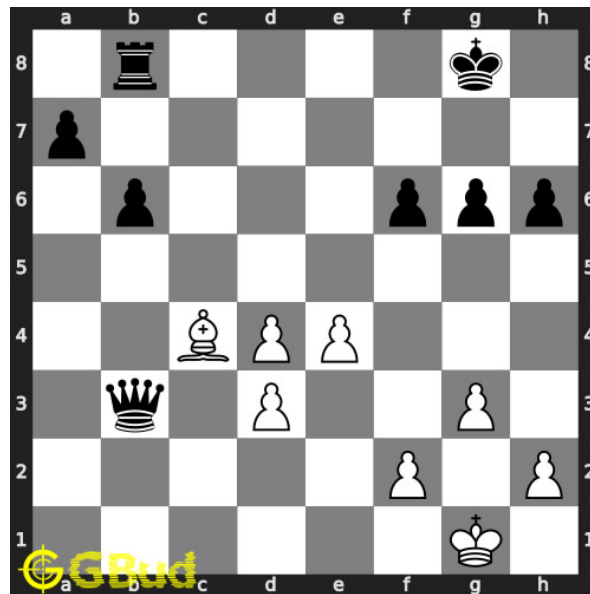


Figure 4: Bc4+ - This is a bishop fork since the bishop attacks the queen and king at the same time. Queen is forced to respond since it will be captured any way

Move 2 Move by black

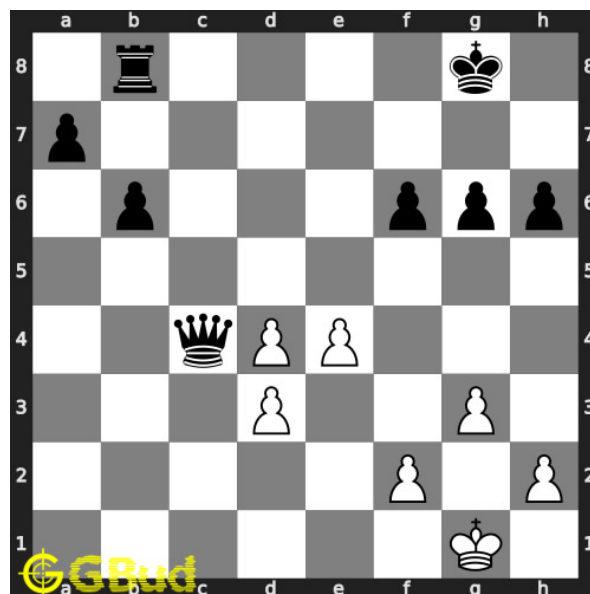


Figure 5: Qxc4 - Opponent understands that they will anyhow lose their queen. They may want to have a maximum damage to you before their queen is captured. Hence they capture your bishop which is a desperado move.

Move 3 Move by white

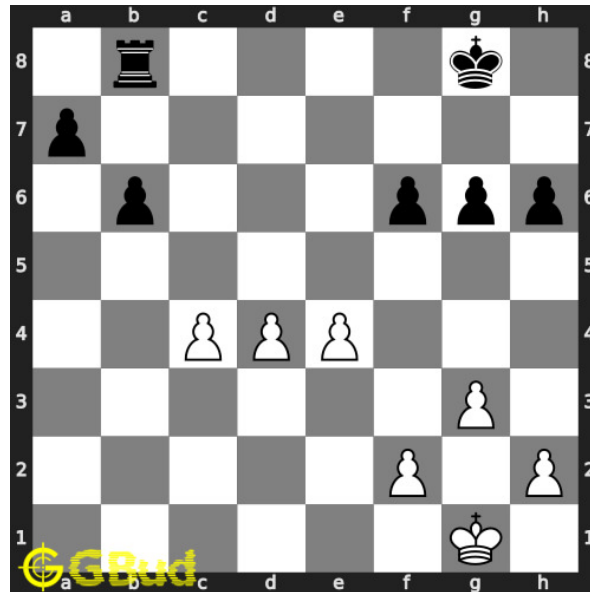


Figure 6: dxc4 - The pawn captures the opponent's hanging queen. This is how you capture queen through a fork

Right moves for the solution to the easy chess puzzle 0056

Based on the objective of the puzzle, you have to make the right moves. Following are the right moves

1. Bc4+, dxc4

Explanation for the moves

1. Bc4+ - This is a bishop fork since the bishop attacks the queen and king at the same time. Queen is forced to respond since it will be captured any way
2. dxc4 - The pawn captures the opponent's hanging queen. This is how you capture queen through a fork
3. Qxc4 - Opponent understands that they will anyhow lose their queen. They may want to have a maximum damage to you before their queen is captured. Hence they capture your bishop which is a desperado move.
4. For right move - You have gained the opponent's queen through a bishop fork. Good strategy
5. For wrong move - You could have moved your bishop to c4 to attack king and queen at the same time. Try again

Categories of easy chess puzzle 0056

This easy chess puzzle falls in these categories.

1. [Easy chess puzzles](#)
2. [Gain puzzles in chess](#)
3. [Fork puzzles in chess](#)
4. [Strategy puzzles in chess](#)
5. [Terminology puzzles in chess](#)

How to view the solution to easy chess puzzle 0056

To view the [solution to this puzzle](#), follow the steps given below

1. Go to the [puzzle page](#)
2. Click the solution button (Key as shown [below](#)) to view the solution



Figure 7: Click the solution button to view solutions @ <https://gbud.in/g4x7pg1>

How to get help for moves in the easy chess puzzle 0056

To get help or the possible next moves in the puzzle, , follow the steps given below

1. Go to the [puzzle page](#)
2. Click the help button (exclamation mark as shown [below](#)) to get help or suggestion on next possible [move](#)



Figure 8: Click the help button to get help on next move @ <https://gbud.in/g4x7pg1>



Figure 9: Solve more easy puzzles @ <https://gbud.in/chsezpz>



Figure 10: Solve other puzzles @ <https://gbud.in/chsgppz>

Play chess for free

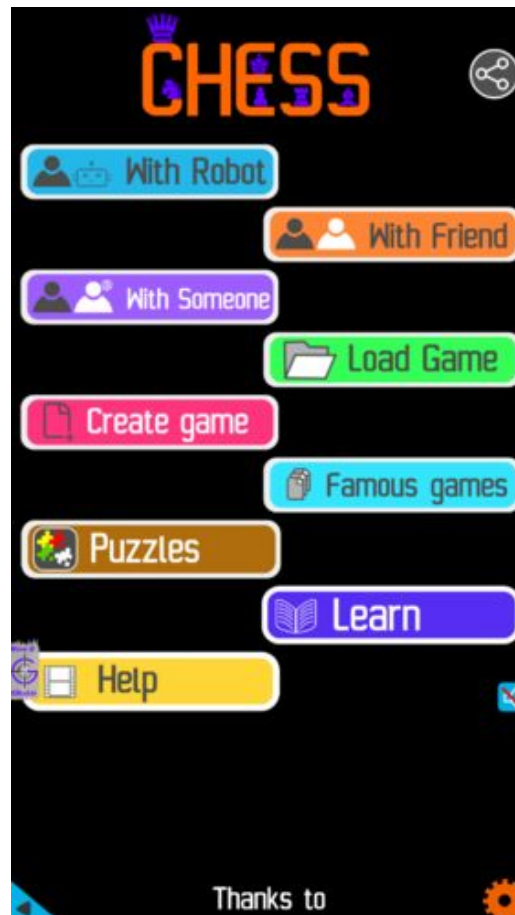


Figure 11: Play chess online for free. Solve puzzles and play with friends

Play chess for free at <https://gbud.in/chs>

We present you a platform to play chess online with friends for free. No need to install any app. You can play chess for free without registration or login.

Simple. You can do several chess related activities.

1. solve chess puzzles
2. learn about chess
3. play chess with computer
4. play chess with friend
5. create your own chess games

6. [fen viewer](#)
7. [fen editor](#)
8. [fen generator](#)
9. [pgn viewer](#)
10. [chess board editor](#)
11. [view famous chess games.](#)



Figure 12: Solve this puzzle online by scanning this QR code or go to the link below

<https://gbud.in/g4x7pg1>

Read the latest article on Easy Chess puzzle # 0056 - Gain queen through a fork by scanning this QR code or click the link

Previous article : [« Easy Chess puzzle # 0055 - Form a battery of queen and rook along d file](#)

Next article : [Easy chess puzzles »](#)

[Back to top](#)

[Contact Us](#)